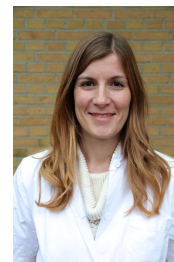


Tina Møller Sørensen
Lektor
Sektion for Medicin, Onkologi og Veterinær Klinisk Patologi
Postadresse:
Dyrlægevej 16
1870
Frederiksberg C
E-mail: tims@sund.ku.dk
Mobil: +4523649496
Hjemmeside: <https://dyrehospitalet.ku.dk/>



Kvalifikationer

PhD
Dimissionsdato: 31 mar. 2018
Veterinærmedicin, dyrlæge
Dimissionsdato: 1 sep. 2006

Kort præsentation

Jeg er lektor i almen medicin hos familiedyr og ansvarlig for vores undervisere og forskere i hospitalets almene medicinske og dermatologiske modtagelsesklinik. Mine primære interesseområder er den kliniske beslutningsproces, anvendeligheden af de diagnostiske test vi har til rådighed samt et fornuftigt brug af antibiotika.

Primære forskningsområder

Urinvejsinfektioner
Antibiotikaforbrug
Vaccineserologi / klinisk anvendelse af vacciner

Undervisnings- og vejledningsområder

Basal Klinisk Teori (underviser i infektionskontrol og vaccinstrategier)
Medicin, Kirurgi og Reproduktion - Mindre Husdyr (Kursusansvarlig og underviser i infektionssygdomme)
Klinisk Undersøgelsesmetodik (KUM) (underviser)
Almen klinisk praksis (underviser)
Specialevejledning primært indenfor forebyggelse, diagnostik og behandling af patienter i almen medicin
Master of Companion Animal Clinical Sciences (underviser)

Mulige interessekonflikter

Medlem af arbejdsgrupperne for Antibiotikavejledning for familiedyr i Danmark, ENOVAT guidelines initiative.
Foredragsholder for CEVA Animal Health, ESVNU, SSI diagnostica, ESCMID, DDD, Idexx, Frederiksstad Dyrehospital
Sponsorater af materialer til projekter fra SSI Diagnostica, COPA Italia, Boehringer Ingelheim

Publikationer

Antimicrobial prophylaxis in companion animal surgery: A scoping review for European Network for Optimization of Antimicrobial Therapy (ENOVAT) guidelines
from European Network for Optimization of Antimicrobial Therapy (ENOVAT) guidelines and the ESCMID Study Group for Veterinary Microbiology (ESGVM), F. E. N. F. O. O. A. T. (. G. A. T. S. G. F. V. M. (., 2024, I: Veterinary Journal. 304, 11 s., 106101.

Influencing attitudes towards antimicrobial use and resistance in companion animals-the impact on pet owners of a short animation in a randomized controlled trial

Wright, E., Jessen, Lisbeth Rem, Tompson, A., Rutland, C., Singleton, D., Battersby, I., Gajanayake, I., Mosher, M., Pflieger, S., Gemmill, T., Sparks, T., Sørensen, Tina Møller & Allerton, F., 2024, I: JAC-Antimicrobial Resistance. 6, 3, 10 s., d1ae065.

O26 | PK/PD informed dosage regimen for antimicrobial prophylaxis in companion animal surgery: From proof of concept to pipeline

Pelligand, L., Allerton, F., Cagnardi, P., Sørensen, Tina Møller & Toutain, P. L., 2023, I: *Journal of Veterinary Pharmacology and Therapeutics*. 46, S1, s. 40-41 2 s.

Flexicult® Vet as a diagnostic tool for bacterial cystitis in guinea pigs

Rueløkke, Mette Lybek, Müller, Anna V, Jessen, Lisbeth Rem & Sørensen, Tina Møller, 2022, *5th International Conference on Avian, Herpetological and Exotic Mammal Medicine : 27-30 March 2022, Budapest, Hungary, ICARE: book of proceedings*. ID76

The impact of a short, animated film on owner attitudes towards antimicrobial use in companion animals—a randomised controlled trial. Research Communications of the 32nd ECVIM-CA Online Congress. ISCAID-O-10

Wright, E., Pflieger, S., Gajanayake, I., Gemmill, T., Jessen, Lisbeth Rem, Sørensen, Tina Møller, Battersby, I., West, E., Atkinson, L., Mosher, M., Rutland, C., Singleton, D., Tompson, A. & Allerton, F., 2022, I: *Journal of veterinary internal medicine / American College of Veterinary Internal Medicine*. 36, 6, s. 2502 1 s.

Evaluation of a point-of-care dot enzyme-linked immunosorbent assay to detect antibodies against canine parvovirus, distemper virus and adenovirus before revaccination

Vasby, Ditte Erika Leth, Kristensen, L., Wallin, A., Lundsgaard, J. F. & Sørensen, Tina Møller, 2021, *BSAVA Congress 2021: Clinical abstract presentations*.

Forbruget af vacciner til hund og kat i Danmark gennem det seneste årti: hvor godt hænger det sammen med gældende vaccineanbefalinger?

Nielsen, Søren Saxmose, Sørensen, Tina Møller, Jessen, Lisbeth Rem & Sandøe, Peter, 2021, I: *Dansk Veterinærtidsskrift*. 2021, 8, s. 36-42 7 s.

Improving hand hygiene standards in the veterinary setting

Sørensen, Tina Møller, 2021, I: *Veterinary Record*. 189, 1, s. 29-31 3 s.

The effect of urine storage temperature and boric acid preservation on quantitative bacterial culture for diagnosing canine urinary tract infection

Hedström, M., Møller, M., Patsekina, H., Damborg, Peter Panduro, Jessen, Lisbeth Rem & Sørensen, Tina Møller, 2021, I: *BMC Veterinary Research*. 17, 379.

Vaccination af din hund

Rokkedal, S., Jessen, Lisbeth Rem & Sørensen, Tina Møller, 2021, 3 s.

WSAVA guidelines for vaccination og titertestning af hund under danske forhold

Rokkedal, S., Jessen, Lisbeth Rem & Sørensen, Tina Møller, 2021, 12 s.

Overweight and obesity did not predispose to subclinical bacteriuria in a mixed population of 152 middle aged and elderly cats – a prospective cross-sectional study

Moberg, Frida Susanna, Kieler, Ida Nordang, Sørensen, Tina Møller, Langhorn, Rebecca, Bjørnvad, Charlotte Reinhard & Jessen, Lisbeth Rem, jan. 2020, I: *Journal of Veterinary Internal Medicine*. 34, 1, s. 1092 ESVNU-P-3.

Evaluation of a point-of-care lateral flow immunoassay for detection of significant bacteriuria in dogs and cats

From, S. S., Drews, M. F., Kjærgaard, A. B., Damborg, Peter Panduro, Jessen, L. R. & Sørensen, Tina Møller, 2020, I: *Journal of Veterinary Internal Medicine*. 34, 1, 1 s., ESVNU-P-8.

Kom godt i gang med klinisk forskning

Nielsen, M., Thøisen, M., Damborg, Peter Panduro & Sørensen, Tina Møller, 2020, I: *Dansk Veterinærtidsskrift*. 2020, 08, s. 38-41

Subclinical bacteriuria in a mixed population of 179 middle-aged and elderly cats: a prospective cross-sectional study
Moberg, Frida Susanna, Langhorn, Rebecca, Bertelsen, P. V., Pilegaard, L. M., Sørensen, Tina Møller, Bjørnvad, Charlotte Reinhard, Damborg, Peter Panduro, Kieler, Ida Nordang & Jessen, Lisbeth Rem, 2020, I: Journal of Feline Medicine and Surgery. 22, 8, s. 678-684

In-house culture and susceptibility testing reduce antibiotic over-prescription in dogs with suspected cystitis – A randomized controlled trial

Sørensen, Tina Møller, Bjørnvad, Charlotte Reinhard, Damborg, Peter Panduro, Guardabassi, Luca, Bjerrum, Lars & Jessen, Lisbeth Rem, 2019, I: Journal of Veterinary Internal Medicine. 33, 2, s. 1092 ESVNU-P-4.

Pre-test probability of urinary tract infection in dogs with clinical signs of lower urinary tract disease

Sørensen, Tina Møller, Holmslykke, M., Nordlund, M., Siersma, Volkert Dirk & Jessen, Lisbeth Rem, 2019, I: Veterinary Journal. 247, s. 65-70 6 s.

Thromboelastography-guided transfusion in dogs with hypocoagulable disorders: A case series

Langhorn, Rebecca, Bochsén, L., Willesen, Jakob, Sørensen, Tina Møller & Kristensen, Annemarie T., 2019, I: Acta Veterinaria Scandinavica. 61, 1, 8 s., 35.

Frygter hunden nytårsbrag?

Sørensen, Tina Møller, 30 dec. 2018, I: Jyllands-Posten. s. 10 1 s.

Hunde med tegn på cystitis overbehandles

Sørensen, Tina Møller, Bjørnvad, Charlotte Reinhard, Cordoba Currea, Gloria Cristina, Damborg, Peter Panduro, Guardabassi, Luca, Siersma, Volkert Dirk, Bjerrum, Lars & Jessen, Lisbeth Rem, jun. 2018, I: Dyr lægen; fagmagasin for dyrlæger, veterinærstuderende og veterinærsygeplejersker. 12, 3, s. 22-26 5 s.

Antibiotikavejledning til familiedyr

Jessen, Lisbeth Rem, Damborg, Peter Panduro, Spohr, A., Goericke-Pesch, S., Langhorn, Rebecca, Houser, G., Willesen, Jakob, Schjærff, Mette, Eriksen, Thomas, Sørensen, Tina Møller, Jensen, V. F., Obling, F. & Guardabassi, Luca, 2018, 2 udg. Den Danske Dyr lægeforening. 67 s.

Effects of Diagnostic Work-Up on Medical Decision-Making for Canine Urinary Tract Infection: An Observational Study in Danish Small Animal Practices

Sørensen, Tina Møller, Bjørnvad, Charlotte Reinhard, Cordoba Currea, Gloria Cristina, Damborg, Peter Panduro, Guardabassi, Luca, Siersma, Volkert Dirk, Bjerrum, Lars & Jessen, Lisbeth Rem, 2018, I: Journal of Veterinary Internal Medicine. 32, 2, s. 743-751

Use of diagnostic tests and the appropriateness of the treatment decision in patients with suspected urinary tract infection in primary care in Denmark - Observational study

Cordoba Currea, Gloria Cristina, Holm, Anne, Sørensen, Tina Møller, Siersma, Volkert Dirk, Sandholdt, H., Makela, M., Frimodt-Møller, N. & Bjerrum, Lars, 2018, I: BMC Family Practice. 19, 1, 7 s., 65.

Cross-sectional survey on the use and impact of the Danish national antibiotic use guidelines for companion animal practice

Jessen, Lisbeth Rem, Sørensen, Tina Møller, Littau Lilja, Z., kristensen, M., Hald, T. & Damborg, Peter Panduro, 11 dec. 2017, I: Acta Veterinaria Scandinavica. 59, 9 s., 81.

Effect of point-of-care susceptibility testing in general practice on appropriate prescription of antibiotics for patients with uncomplicated urinary tract infection: a diagnostic randomised controlled trial

Holm, Anne, Cordoba Currea, Gloria Cristina, Sørensen, Tina Møller, Jessen, Lisbeth Rem, Frimodt-Møller, N., Siersma, Volkert Dirk & Bjerrum, Lars, okt. 2017, I: B M J Open. 7, 10, 9 s., e018028.

The effect of storage temperature and boric acid preservation on quantitative bacterial culture for diagnosing canine urinary tract infection

Sørensen, Tina Møller, Møller, M., Patsekina, H., Damborg, P. & Jessen, Lisbeth Rem, sep. 2017, s. 1.

Clinical accuracy of point-of-care urine culture in general practice

Holm, Anne, Cordoba Currea, Gloria Cristina, Sørensen, Tina Møller, Jessen, Lisbeth Rem, Frimodt-Møller, N., Siersma, Volkert Dirk & Bjerrum, Lars, jun. 2017, I: Scandinavian Journal of Primary Health Care. 35, 2, s. 170-177 8 s.

Danske dyrlægers brug af Antibiotikavejledning til familiedyr: en spørgeskemaundersøgelse

Lilja, Z. L., Sørensen, Tina Møller, Kristensen, M., Hald, T., Damborg, Peter Panduro & Jessen, Lisbeth Rem, okt. 2016, I: Dansk Veterinaertidsskrift. 10, s. 18-25 8 s.

Bacterial culture does not improve antibiotic choice in dogs with suspected urinary tract infection: an observational study in Danish small animal practices

Sørensen, Tina Møller, Bjørnvad, Charlotte Reinhard, Hølmkjær, K. M., Guardabassi, L., Bjerrum, L. & Jessen, Lisbeth Rem, sep. 2016. 1 s.

Diagnostic work-up does not affect appropriate antibiotic prescription in dogs with suspected urinary tract infection: an observational study in Danish small animal practices

Sørensen, Tina Møller, Bjørnvad, Charlotte Reinhard, Hølmkjær, K. M., Guardabassi, L. & Jessen, Lisbeth Rem, sep. 2016.

Evaluation of different sampling methods and criteria for diagnosing canine urinary tract infection by quantitative bacterial culture

Sørensen, Tina Møller, Jensen, A. B., Damborg, Peter Panduro, Bjørnvad, Charlotte Reinhard, Guardabassi, Luca & Jessen, Lisbeth Rem, aug. 2016, I: The Veterinary Journal. 216, s. 168-173 6 s.

Exploring the feasibility and synergistic value of the One Health approach in clinical research: protocol for a prospective observational study of diagnostic pathways in human and canine patients with suspected urinary tract infection

Cordoba Currea, Gloria Cristina, Sørensen, Tina Møller, Holm, Anne, Bjørnvad, Charlotte Reinhard, Bjerrum, Lars & Jessen, Lisbeth Rem, 10 nov. 2015, I: Pilot and Feasibility Studies. 1, 9 s., 38.

Effect of antibiotic treatment in canine and feline urinary tract infections: a systematic review

Jessen, Lisbeth Rem, Sørensen, Tina Møller, Bjørnvad, Charlotte Reinhard, Nielsen, Søren Saxmose & Guardabassi, Luca, 2015, I: The Veterinary Journal. 203, 3, s. 270-277 8 s.

Fighting Antibiotic Resistance: The one Health Approach in Human and Veterinary Primary Care to Increase Prudent use of Antibiotics for Urinary Tract Infection (UTI)

Holm, A., Sørensen, Tina Møller, Cordoba-Currea, G., Leihardt, L. K. T., Nielsen, J. P., Bjørnvad, Charlotte Reinhard, Jessen, Lisbeth Rem & Bjerrum, L., 2015. 1 s.

Point of care susceptibility testing in primary care: does it lead to a more appropriate prescription of antibiotics in patients with uncomplicated urinary tract infections? Protocol for a randomized controlled trial

Holm, Anne, Cordoba Currea, Gloria Cristina, Sørensen, Tina Møller, Jessen, Lisbeth Rem, Siersma, Volkert Dirk & Bjerrum, Lars, 2015, I: B M C Family Practice. 16, 8 s., 106.

Antibiotic resistance and the one Health strategy: General practice is part of the crew

Cordoba Currea, Gloria Cristina, Sørensen, Tina Møller, Jessen, Lisbeth Rem & Bjerrum, Lars, 2014. 2 s.

Evaluation of plasma and urinary levels of 6-keto-prostaglandin F_{1a} as a marker for asymptomatic myxomatous mitral valve disease in dogs

Rasmussen, C. E., Müller, Anna V, Kjempff, C. T., Tarnow, I., Kjølgaard-Hansen, M., Kamstrup, T. S., Sterup, A., Sørensen, Tina Møller & Olsen, Lisbeth Høier, 2010, I: Veterinary Journal. 184, 2, s. 241-246 6 s.

Changes in platelet function in Dachshunds with early stages of myxomatous mitral valve disease

Moesgaard, S. G., Sørensen, Tina Møller, Sterup, A., Tarnow, I., Kristensen, Annemarie T., Jensen, Asger Lundorff & Olsen, Lisbeth Høier, 2009, I: Research in Veterinary Science. 86, 2, s. 320-324 5 s.

Aktiviteter

Pas på hunden i vinterkulden

Sørensen, Tina Møller (Deltager)

5 dec. 2018